

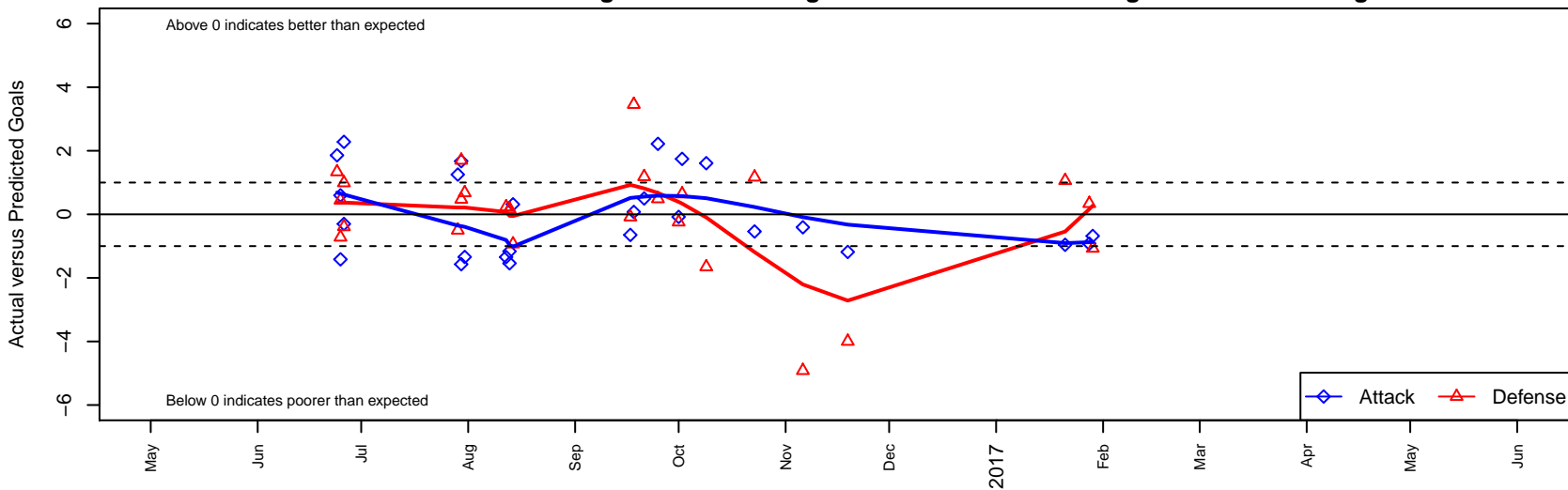
# Washington Timbers White 1 B01

Washington Timbers  
 Vancouver, WA  
 B01 total strength=1346  
 attack=7.8 defense=5.64  
 fall league = PTT B99 BHS

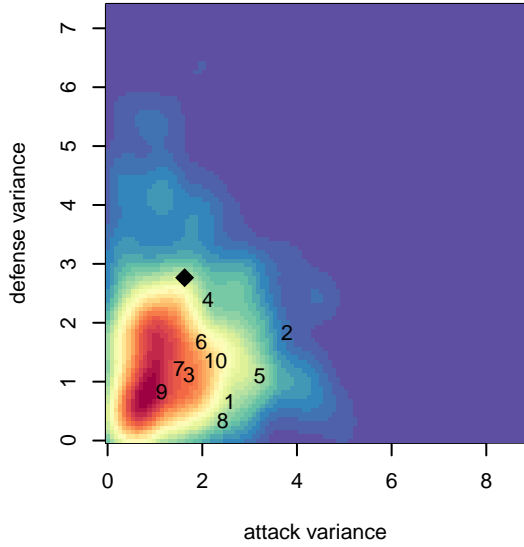
alt names used:  
 WA Timbers FC B01 White  
 WASHINGTON TIMBERS FCWASHINGTON T  
 WA Timbers 01B White 1

Venues played:  
 2016 Clash At the Border Bronze U16  
 2016 Mt Hood Challenge U16 Gold  
 2016 Bend Premier Cup Timbers Super Group  
 2016 PTT B99 BHS  
 2016 WYS Presidents Cup B01 Div 1

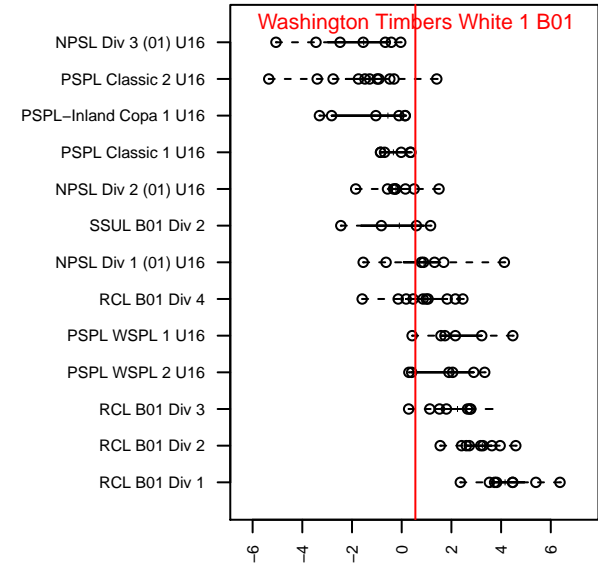
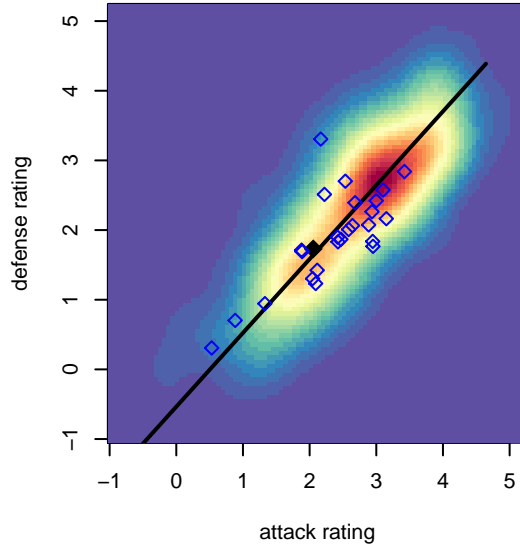
**Washington Timbers White 1 B01**  
 Dots are actual minus expected GF (blue circles) and GA (red triangles).  
 Blue line is smoothed change in attack strength. Red is smoothed change in defense strength.



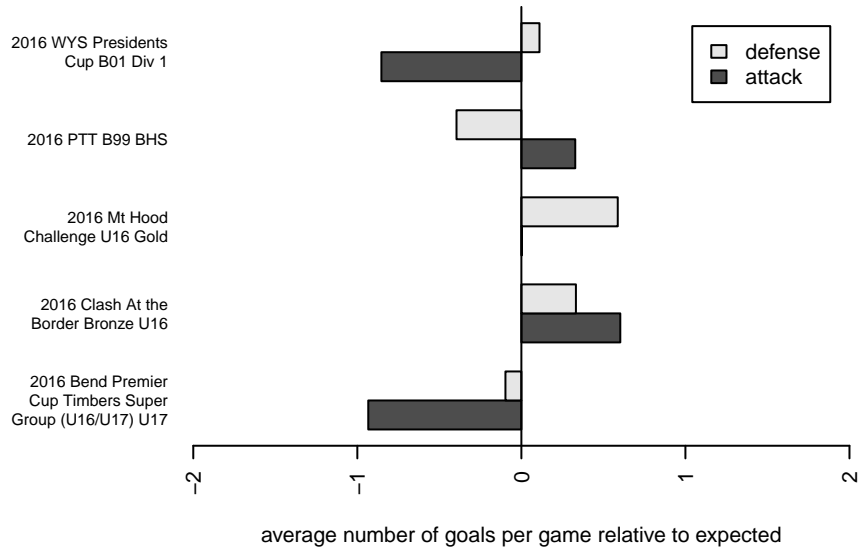
**attack and defense variance (black dot)  
relative to other teams  
and top 10 in region**



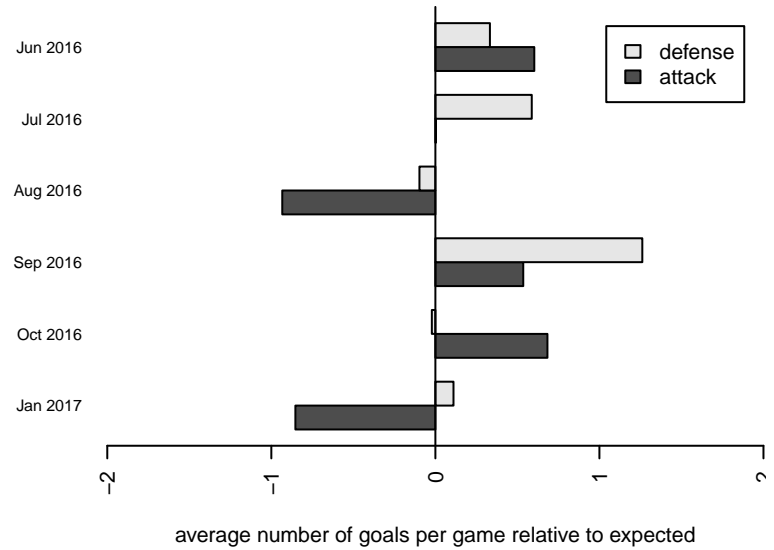
**attack and defense rating  
relative to others at age  
and all opponents in last 13 months**



**Performance relative to 13 month average**



**Performance relative to 13 month average**



<b>date</b>	<b>home</b>		<b>away</b>		<b>venue</b>	<b>pred.home</b>	<b>pred.away</b>
:017-01-29	Kitsap Alliance FC Red B01	3	Washington Timbers White 1 B01	0	2016 WYS Presidents Cup B01 Div 1	1.93	0.68
:017-01-28	PacNW Blue B01	2	Washington Timbers White 1 B01	0	2016 WYS Presidents Cup B01 Div 1	2.34	0.92
:017-01-21	Washington Timbers White 1 B01	0	Seattle United Tango B01	2	2016 WYS Presidents Cup B01 Div 1	0.96	3.06
:016-11-19	Washington Timbers White 1 B01	0	LASC Leones Negros B01	7	2016 PTT B99 BHS	1.18	3.00
:016-11-06	Washington Timbers White 1 B01	1	Washington Timbers White 1 B00	7	2016 PTT B99 BHS	1.41	2.08
:016-10-23	Washington Timbers White 1 B01	1	Pacific FC Blue B01	0	2016 PTT B99 BHS	1.54	1.17
:016-10-09	Academia Leon B00	5	Washington Timbers White 1 B01	3	2016 PTT B99 BHS	3.35	1.39
:016-10-02	Washington Timbers Green 2 B01	0	Washington Timbers White 1 B01	5	2016 PTT B99 BHS	0.64	3.26
:016-10-01	Washington Timbers White 1 B01	1	SFC -Unk B00	3	2016 PTT B99 BHS	1.08	2.76
:016-09-25	Washington Timbers Green 1 B99	1	Washington Timbers White 1 B01	4	2016 PTT B99 BHS	1.49	1.78
:016-09-21	Pacific FC Blue-Strikers B98	4	Washington Timbers White 1 B01	1	2016 PTT B99 BHS	5.18	0.50
:016-09-18	Academia Leon B99	0	Washington Timbers White 1 B01	1	2016 PTT B99 BHS	3.46	0.92
:016-09-17	Washington Timbers White 1 B01	0	Washington Timbers Green 1 B98	4	2016 PTT B99 BHS	0.65	3.92
:016-08-14	Washington Timbers White 1 B01	2	Bend FC Timbers Red B01	2	2016 Bend Premier Cup Timbers Super Grou	1.69	1.07
:016-08-13	Pacific FC Blue B01	1	Washington Timbers White 1 B01	0	2016 Bend Premier Cup Timbers Super Grou	1.17	1.54
:016-08-13	NEU White B00	2	Washington Timbers White 1 B01	0	2016 Bend Premier Cup Timbers Super Grou	2.14	1.16
:016-08-12	Washington Timbers White 1 B01	0	Cascade Rush Steelheaders B01	2	2016 Bend Premier Cup Timbers Super Grou	1.34	2.23
:016-07-31	Washington Timbers White 1 B01	0	Crossfire Oregon Green I B01	1	2016 Mt Hood Challenge U16 Gold	1.34	1.68
:016-07-30	Tynecastle FC B01	2	Washington Timbers White 1 B01	0	2016 Mt Hood Challenge U16 Gold	2.47	1.57
:016-07-30	Washington Timbers White 1 B01	3	ETFC Valencia Black B01	1	2016 Mt Hood Challenge U16 Gold	1.33	2.70
:016-07-29	Washington Timbers White 1 B01	2	BSC HR Black B01	2	2016 Mt Hood Challenge U16 Gold	0.75	1.50
:016-06-26	Washington Timbers White 1 B01	5	Bend FC Timbers White B01	0	2016 Clash At the Border Bronze U16	2.72	0.99
:016-06-26	FC Portland -Unk B01	2	Washington Timbers White 1 B01	0	2016 Clash At the Border Bronze U16	1.61	0.30
:016-06-25	PCFC Venom B01	0	Washington Timbers White 1 B01	5	2016 Clash At the Border Bronze U16	0.45	4.40
:016-06-25	Washington Timbers White 1 B01	4	PCU Black B01	1	2016 Clash At the Border Bronze U16	5.42	0.28
:016-06-24	Washington Timbers White 1 B01	4	Westside Timbers Mundial B01	0	2016 Clash At the Border Bronze U16	2.14	1.34